



HP Tuners Version 4.X Made Simple

Welcome to EFI Tuning with HP Tuners - Tutorial Introduction - (GM)



Throttle-Up Industries Training Tutorial

- Tutorial Introduction -

Introduction

Welcome and congratulations on purchasing what we believe to be the most innovative and interactive training tutorial available on the market today for HP Tuners. Whether you are new to tuning or experienced, it is not a beginners, intermediate or advanced course...it is a complete course for everyone. It's the only tutorial you will need to buy. It's a 345+ page tutorial full of information, pictures, videos, PowerPoint presentations and tuning tips based on your EFI systems, their sensors and how they work. This information, while specific to a GM V8 platform is also somewhat generic in nature and can be applied to the Ford and Dodge platforms as well. It can also be applied to EFI Live as well as other standalone tuning systems.

Tuning Tutorial Overview

The Throttle-Up Industries Tuning Tutorial approach to learning is to start with the basics and understand what and how the components operate. From there we formulate a solid foundation to build on. You will learn the how and why.....not just what to put where. You will be able to recognize situations of good and bad, and know how to formulate corrective action to correct the situation(s). We believe you will be prepared to take on any tuning and even mechanical problem identification/solving with what they call in the engineering field "root cause and corrective action"... What really is happening? What is causing the issue/negative result and based on a good understanding of how it works, what needs to be done to make it right?

The tutorial is made up of 11 Modules in PDF format that is completely downloadable and can be saved to your computer. You will need **Adobe Acrobat Reader** to view the tutorial. If you don't already have it installed on your computer, it can be downloaded here:

<https://acrobat.adobe.com/us/en/acrobat/pdf-reader.html>

Modules included in the tutorial:

1. Basics to EFI Tuning.
2. EFI Sensors and Open/Closed Loop.
3. Fuel Supply and injectors.
4. Wideband Setup.
5. Ignition and Spark.
6. HP Tuners VCM Editor Overview and Features.
7. HP Tuners VCM Scanner Overview and Features.
8. Gen III/IV Adaptive Idle.
9. Enhanced OS.
10. Start-Up Tune File.
11. A Tuning Strategy.

Throttle-Up Industries Training Tutorial

- Tutorial Introduction -

- Six(6)**PowerPoint** presentations detailing the specific procedure steps associated with the tuning process.
- For those who don't have PowerPoint on their computers, you can download a free **PowerPoint Viewer** here:
- https://download.cnet.com/PowerPoint-Viewer/3000-2075_4-75450958.html
- Presentations include:
 1. Advanced EFI and Tuning – supports the above 11 Course Modules.
 2. Wideband Setup – supports and adds detail to Module 4.
 3. Scanner Filter – supports numerous modules as far as logging and filtering for accurate street tuning.
 4. Strategy and Base Tune Development; perhaps the most valuable part of this course...table by table review and approach to tuning. 😊
 5. MAF Tuning; detailed procedures for MAF tuning and scanner use.
 6. VE/VVE Tuning; detailed procedures for VE/VVE tuning and scanner use.

Also included in this tutorial are embedded videos which will walk you through selected course subject material to further embellish your goals and objectives of learning HP Tuners. We also utilize PowerPoint presentations to also support your training. If you do not have PowerPoint on your computer, the link is above for downloading.

We want to warn you that this is not a tutorial that will tell you what values to put in what table based on some arbitrary platform configuration. This is not how you learn! Our intent is to mentor you in the detailed theory of operation of an EFI system and its PCM, so you can formulate a tune strategy and values. Additionally, we integrate detailed operational instructions on the HP Tuners VCM Editor and Scanner so they become yet another important tool in your box to identify, isolate, diagnose, develop updates and finally verify your results.

What this means is you will be able to observe a situation and based on the knowledge learned from this tutorial, you will understand what is happening as well as why. Once you are armed with that detailed knowledge, the corrective action becomes intuitive.

Throttle-Up Industries Training Tutorial

- Tutorial Introduction -

Tutorial Modules 1-9 will take you on a fantastic journey to:

- EFI systems review: sensor discussions, Fuel /injector system design/verification and use
- Alcohol effects in fueling, using E85; now you will have to tune in Lambda ☺
- Ignition timing and spark control; street tuning approach for power
- MAF/VE airflow including math the PCM is using to derive its fueling
- Wideband selection and setup; analog, serial and OBD II interfaced to Standard and Pro MPVI's
- Injector selection and tune data input; the good, the bad and the ugly.....
- End Of Injection Timing – calculate new cam events and Injection points for that big cam
- 2 huge sections on HP Tuners Editor and Scanner walk through, discussions and use; detailed table by table review and all commands available to use
- Gen III vs. GEN IV comparisons and similarities
- Scanner filter design, implementation and verification
- Virtual Volumetric Efficiency tuning
- Virtual Torque Model tuning
- Torque Management
- Adaptive Idle – everything you ever wanted to know but were afraid to ask...
- Forced Induction options
- HP Tuners Enhanced Operating systems; their description. Selection and activation
- HP Tuners patches; how to get rid of some of those nagging nits.....
- Tuner lock
- Detailed Step by Step procedure for modifying a Tune File
- And much more.....but that's not all.....

What you actually bought the tutorial for.....Tuning!

Tutorial Modules 10 and 11 are the final modules and the ones that will pull it all together. In Module 10 we begin the base tune development based on all the knowledge we have accrued through the first 9 modules. Module 11 we actually get in the vehicle and begin the Idle, MAF, VE and WOT tuning as well as detailed logging with the HP Tuners VCM Scanner.

I know. It seems like a lot of boring reading and work to go through before even changing a table, but I'm sure you will thank us in the end. In Modules 10 and 11 we review and formulate your tuning strategy and how to go about the tune based on your platform build.

Throttle-Up Industries Training Tutorial

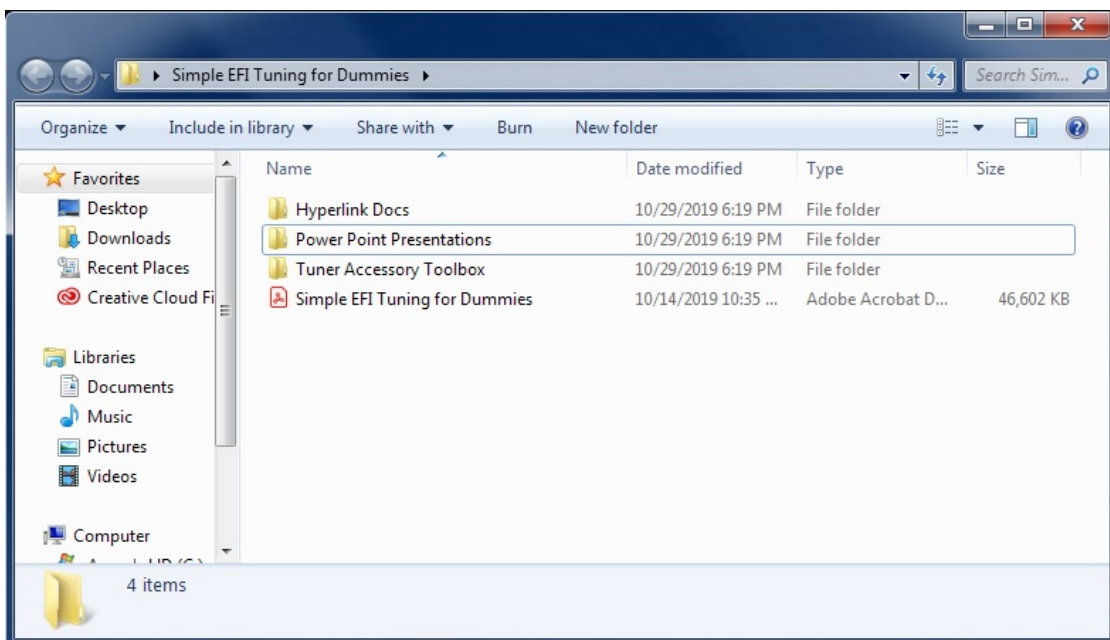
- Tutorial Introduction -

Tutorial Module 10 and 11 A step-by-step tuning guide with strategy.

- Throttle-Up Industries 10 Phases of Tuning – THE TUNING ROAD MAP TO FOLLOW!
- How to develop tuning strategies and why - Blended/MAF/ VE, open or closed loop etc.
- Open & Closed Loop - enable/disable with video.
- Long Term Fuel Trims - enable/disable with video.
- Wideband setup and programming - Standard vs Pro interface with video.
- MAF and VE tuning setup – Editor file and Scanner preparation with video.
- Scanner error data review and validation – Do we have good, steady-state data?
- Step-by-step procedures for tuning MAF and VE - Scanner operation and filter recommendations including GEN III VE and GEN IV/V Virtual Volumetric Efficiency.
- Scaling your tune; options ... full blown scaling effort to a simple Double/Half technique.
- Fuel System Control Module (FSCM) tuning.
- Logging tips and a library of default scanner configurations.
- Step-by-step, table-by-table tuning to develop your base tune - prepare for in-car tuning.
- Tune Strategy recap - what is it, why use it and when to use it? Now into the car.....

How do I get this Training Tutorial?

Simply go to to www.throttleupindustries.com and purchase it for \$149. Once you purchase the tutorial, a link will be immediately sent to your email for you to download the course material. You will download 2 separate files. The first one will be the actual .pdf tutorial itself and the second one will be a zipped folder containing all the support files needed for the .pdf tutorial. Once you download them both, you will extract the zip folder and simply place the .pdf tutorial inside the extracted folder. It's that simple! When complete, your folder should look like the picture below.



Throttle-Up Industries Training Tutorial

- Tutorial Introduction -

The above file structure will allow the hyper-links to work as designed. You begin with Module 1 and follow through with each subsequent module as well as links along the way. We recommend you go through the entire tutorial at least once, as jumping around may mean you missed some important prerequisites. This can make your tuning experience quite frustrating.

In closing, we rely heavily on word of mouth and ask that if you are happy with this tutorial to tell a friend, if not, please tell us. We strive to produce the best overall tuning learning product available today and make your learning process as painless as possible. Your feedback, good or bad, will help us achieve our goal in helping new tuners learn.

This training tutorial contains over 345+ pages of detailed information with almost 2 hrs of video and PowerPoint presentations. Pricing for the complete training tutorial is \$149.

Visit our website at www.throttleupindustries.com for all your HP Tuners products and credits. We offer credits at \$47.95 each.

Please be advised that your Training Tutorial will be stamped upon download with your name and email to prevent circulation and help protect our digital information from piracy. Please respect that we have hundreds of hours into this training tutorial for you and it cannot be shared or distributed without our approval. If we find it is, we will prosecute to the furthest extent of the law. Thank you for protecting your purchase and respecting the Throttle-Up team!

Throttle-Up Industries Training Tutorial

Module 1 - Basics to EFI Tuning

Table of Contents

Introduction	3
Cylinder/Bank assignments.....	4
Initial Engine Design Goals and Requirements	4
Fuel Consumption, Delivery and Injector sizing.....	4
Figure 2 – Sample Fuel System calculator based on desired Horsepower (E10 vs. E85); double click here for functioning copy.....	5
Figure 3 -- Example of hose sizing to Horsepower (AN to inch conversion included).....	6
Airflow monitoring and calculations – MAF, VE and VVE fundamentals.....	6
MAF Sensor to PCM -- MAF Airflow to Cylinder Airmass to Fuel Mass calculations	7
Volumetric Efficiency (VE).....	8
Table 1 -- Engine Volume to Cylinder Volume to 100% VE g/cyl	8
Variable Valve Timing and VE tuning	12
PCM math and calculations	15
Fuel Injection – injection timing and injector pulse width determination	16
Gen III Start of Injection and End of Injection overview	18
Gen IV Start of Injection and End of Injection Overview	20
Gen IV Injection Timing Worksheet – calculate Cam events and develop injection timing parameters	23
Let’s light this candle.....3-2-1 ignition	25
Peak Combustion Pressure	25
Module 1 re-cap.....	26

Throttle-Up Industries Training Tutorial

Module 2 - Sensors and Open/Closed Loop

Table of Contents

Introduction	3
Sensors	3
Cam and Crank Sensors.....	3
MAF Sensor	6
Evolution of the MAF tables.....	7
Throttle Position Sensor (TPS).....	9
Manifold Absolute Pressure (MAP).....	10
Intake Air Temperature (IAT)	10
Swap Projects and integrating IAT correctly – See Addendum 1 for working Gen IV to Gen III calculator	11
Narrow Band and Wideband O2 Sensors.....	13
The 3 ways to measure combustion AFR	14
Lambda vs AFR vs Equivalence Ratio	14
Open vs. Closed Loop modes and Fuel Trim Theory of Operation	15
Open Loop.....	15
Closed Loop.....	16
Closed Loop Long Term and Short Term Fuel Trims (LTFT/STFT).....	17
Long Tern Fuel Trims	17
Fuel Trim Cell parameter – Your logging buddy.....	19
Closed Loop Wrap Up....and a word or 2 on Open Loop.....	20

Table of Contents

Introduction	3
Fuel Delivery System Overview	3
Returnless	3
Return	3
Manifold and Fuel Pressure vs injector flow rates.....	3
Figure 1 -- Relationship between absolute and gauge pressure conventions relating to the MAP and IFR table evolution	4
Fuel Injectors.....	6
Injection Flow Rate vs Fuel/Manifold Pressure	7
Fuel Injector Tuning Data.....	10
Injector selection and Recommendations	14
Injector Math and conversion tools.....	15
Figure 14 -- Calculator to convert 58 psi injection flow rate to Gen III and Gen IV IFR tables; double click to open excel sheet.....	15
Figure 15 -- EC Tune calculator to convert Injector rated flow rate; double click to open excel sheet	16
Added Bonus #1 -- Gen IV injector data converted to LS1 formats.....	16
Added Bonus #2 -- Dave Steck Ford to GM Injector Characteristics conversion toolset	16
Fuel System Tuning and logging.....	16
Static Fuel delivery (Pressure) can't keep up with technology; how we compensate.....	19
Fuel System Control Module -- FSCM	19
When a Fuel Delivery System runs out of poop.....injectors, pump, fuel lines, FPCM or all the above ??????	21
<i>BREAKING NEWS ALERT</i>	23
<i>HP Tuners Releases FPCM Control Module Programming</i>	23
FPCM Programmability	23
Wrap Up	24

Throttle-Up Industries Training Tutorial

Module 4 - Wideband Setup

Table of Contents

Introduction	3
Wide Band operation and Software Interface Overview	3
Stoichiometric.....	3
O2 Sensor Overview.....	4
Narrowband O2 sensors details.....	4
Figure 1-- Typical Narrowband O2 Sensor Tuning parameters (E38).....	5
Wideband O2 Sensors.....	5
The 3 ways to measure combustion, but only one is correct!	
Lambda (λ)	5
Air Fuel Ratio (AFR)	6
Equivalence Ratio (Eq Ratio)	6
Figure 2 -- Why Lambda is the way to go.....simpler.....	6
Wideband Selection Guide.....	7
HP Tuners Wide Band Setup and programming – Analog vs Serial	8
Programming the Analog Wideband Transform Equation.....	8
AFR500 example ... data derived from manual.....	8
ERM Performance Tuning Wideband Gain and Offset Tutorial Calculator	9
How to Add the Wideband to your HP Tuners VCM Scanner	9
Adding the WB to the VCM Scanner Channel table using the Parameter selector table is the 2 nd step.....	9
Analog Wideband Interface	9
Serial Wideband Interface	10
Figure 3 -- Adding MPVI A/D port 1 to the Channel Table for Analog Wideband Transform	10
Converting MPVI A/D voltage to AFR/Lambda (How to Transform).....	11
User Defined	12
How to Transform a User Defined Wideband -- Video	13
Interfacing your Wideband to an HP Tuners Standard MPVI – Overview	15
How to Interface a Wideband to a Standard MPVI – Video.....	15
Advanced Wideband Training Presentation – Power Point Presentation	16

Throttle-Up Industries Training Tutorial

Module 5 - Ignition and Spark

Table of Contents

3-2-1 Ignition....let's light this candle	3
The quest for the Holy Grail....MBT or Peak Cylinder Pressure.....	3
A look at the cylinder and combustion cycle	4
HP Tuners VCM Editor Spark Advance Tables.....	4
Spark>Advance Tables	5
Main Spark Advance.....	5
Cranking/Start.....	8
Idle Spark Advance.....	9
Idle Adaptive Spark Control	10
Spark Limiters>Spark Ramp Out	12
Spark Correction – AFR, ECT, IAT etc.	13
CAT Light-off.....	17
Variable Cam Spark	18
Flex Fuel Spark	18
Start Up Flare Control	20
Spark>Retard Tables	21
Recommended Scanner Channels for Spark and Retard logging.....	22
Knock.....	23
Burst Knock	26
Spark>Dwell	27
Spark>Knock Sensors	27
General (GEN III only).....	27
Knock Sensor Tip-In.....	27
Tuning and Logging Tricks	28
Street tuning example.....	29
Closing/Wrap Up	31

Throttle-Up Industries Training Tutorial

Module 6 - VCM Editor Overview

Table of Contents

Introduction	5
Editor Imperial vs. Metric System and Units options.....	6
Figure 2 -- Imperial and Metric System/Units selection	6
VCM Editor FILE commands	7
Save and Open	7
RECENT FILES.....	7
EXIT	7
VCM Editor EDIT commands	8
CALIBRATION DETAILS.....	8
View Change/History Logs	8
Gear/Tire Wizard.....	8
Change Vin Wizard.....	8
Navigator.....	8
View	8
Virtual Volumetric Efficiency (Gen IV and V)	9
Virtual Torque (Gen IV and V)	9
Add Slave Segment Data (Gen IV and V).....	9
USER DEFINED PARAMETERS (Gen IV and V).....	9
VCM Editor COMPARE commands.....	10
OPEN/CLOSE COMPARE FILE.....	11
RECENT FILES.....	11

Throttle-Up Industries Training Tutorial

Module 6 - VCM Editor Overview

SHOW MAIN/COMPARE FILE and SHOW DIFFERENCES	11
VIEW COMPARISON LOG	12
COPY OVER SELECTED/ALL DIFFERENCES	12
EXPAND ALL and COLLAPSE ALL.....	13
VCM Editor FLASH commands	13
Vehicle Writer/Reader	14
VCM Editor TOOLS commands.....	15
UNIT CONVERSION and CALCULATOR	16
OPTIONS.....	16
SYSTEMS OF UNITS.....	16
TUNER LOCK.....	16
LOAD LAST TUNE ON STARTUP	16
VCM Editor WINDOW commands.....	17
Figure 15 -- Editor WINDOW options.....	17
Figure 16 -- Editor WINDOW Cascade example.....	17
Figure 17 -- Edit Window Vertical example	18
Figure 18 -- Edit WINDOW Horizontal example.....	18
VCM Editor HELP commands	19
HELP	19
Customer Center	20
VCM Editor APPLICATION KEYS.....	21
Credit upgrade program	21

Throttle-Up Industries Training Tutorial

Module 6 - VCM Editor Overview

VCM Editor LICENSE INFORMATION	22
VCM Editor VCM SUITE INFORMATION	24
VCM Editor ABOUT	25
Buying Credits and applying to a file.....	26
VCM Editor Commands Wrap-up.....	27
Appendix 1 -- Tuner locking in VCM Suite 4.X.....	28

Throttle-Up Industries Training Tutorial

Module 7 - VCM Scanner Overview

Table of Contents

Introduction.....	3
VCM Editor and Scanner File Structure Overview	3
Figure 2 -- Typical HP Tuners “WORK” folder structure accessed through (My Document) path.....	5
LOGS AND TUNES.....	5
SETTINGS	6
VCM SCANNER	7
How to handle Scanner .xml files.....	9
Logging/Tuning Setup Procedures	11
HP Tuners VCM Scanner features; presenting the new and improved 4.X VCM Scanner.....	11
Figure 8 -- Version 4.XX Display with Chart Display Layout Editor open.....	13
VCM Scanner Setup and theory of operation	14
Channel and Channel Selector table overview	14
Channels and External Sensor setup using Channel Selector table and Transform features	15
Figure 10 -- Version 4.X Channel and Channel Selector table top level Icon labels and functionality	16
VCM Scanner Channel table setup, basic operation and recommendations.....	17
VCM Scanner Wideband setup in Channel table; Transform – A must read by all	18
My Wideband gauge is reporting different than my HP Tuners log????	18
Bonus Videos – Scanner Overview, Wideband Interface to Standard MPVI and Transform User Defined Wideband	19
Channel Display Layout Wrap-up	21
Chart vs. Time/Chart Display Overview	21
Version 4.X Chart Editing Overview	23
Version 4.X Graph Layout Overview	26
Figure 19 -- Version 4.X Graph Display Layout Editor Overview.....	27
Logging with the Graph and the pursuit of the Holy Grail.....steady state data and repeatability	28
Version 4.X Graph Top Level Operation.....	30
Version 4.X Graph Filter Functions – See Module 10 for more Filter Detail	34
Filter Wizard	36
Detailed Filter design and validation using the Scanner	37
Addendum 1 --Recommended Gen III Crank, Startup and Idle Parameters.....	40

Throttle-Up Industries Training Tutorial

Module 8 - GenIII/IV Adaptive Idle Tuning

Table of Contents

Introduction	4
Adaptive Idle Spark Control	4
Idle Spark Advance/Base Timing setup	5
Adaptive Timing control.....overspeed / underspeed control	6
Figure 2 -- LS1 (1997-2004) Over/Underspeed VCM Editor table example	7
Figure 3 LS2 (E40) and LS3/7 (E38/67) and up Over and Underspeed Editor tables; increased functionality.....	7
Idle Spark Tuning Tips	8
Large Cam Tuning Strategy -- Over/Underspeed	8
Utilize Adaptive Idle Spark values to determine idle airflow settings.....	8
Figure 5 – Gen III typical big cam adaptive idle control graphic (+/- 5 degree resolution on a 25 degree base setting)9	
Disable Adaptive Idle Timing via the Scanner VCM Control feature.....	9
Adaptive Idle Air Control – The Real Magic !	10
Base Idle Airflow contributors are.	12
• Base Running Air Flow (BRAAF, RAF, Minimum Idle Air etc).....	12
• Cooling Fan.....	12
• AC	12
• Deceleration Fuel Cut Off (DFCO)	12
• Throttle Follower and Cracker	13
• Startup Friction Airflow	13
• Startup Airflow	13
Adaptive Idle Airflow; the important idle air correction function	13
• Long Term Idle Trim (LTIT) and Short Term Idle Trim (STIT)	13
Desired Idle Airflow or “the final answer”	14
Adaptive Idle Control – How do we make it work?.....	14
The magic behind adaptive idle air control -- P-I-D.....not the one's you think!.....	14
• Proportional (P).....	15
• Integral (I).....	15
• Derivative (D)	15
Drive by Cable (DBC)/Idle Air Control (IAC).....	17
Idle Throttle Plate set screw adjustment Procedure.....	18
IAC Steps vs. Effective area (mm2)	19
Drive By Wire / ETC Control	20

Throttle-Up Industries Training Tutorial

Module 8 - GenIII/IV Adaptive Idle Tuning

Gen IV Idle Control and tuning concept changes.....	20
Introduction	20
Maximum Idle Area.....	21
Final Idle Minimum Airflow or Idle Desired Airflow equivalent.....	22
Procedure for setting initial Final Minimum Air.....	23
Procedure for setting initial Idle Proportional and Integral Airflow values	24
Gen IV Idle Tuning Wrap Up.....	25
Throttle Follower and Cracker as we know it are gone!.....	26

Throttle-Up Industries Training Tutorial

Module 9 - Enhanced OS and Patches

Table of Contents

Introduction	4
Figure 1 – Vehicle PCM/TCM re-flash and read Write Drop Down Window/Options.....	4
PCM/TCM Read and Write Operations – See Figure 2 below.....	4
Figure 2 -- PCM/TCM Read and Write control.....	5
Calibration Data vs. Operating System	5
Figure 3 -- Calibration Detail description.....	6
HP Tuners Enhanced Operating Systems and Patches.....	7
You may not need to apply EOS for you FI modification – Gen IV/V setups are very adaptable.....	8
Figure 4 -- VVE table implemented with 2 BAR Manifold Absolute Pressure axis	9
Figure 5 -- Stock Spark Airmass axis value ready for re-programming.....	9
Figure 6 -- Modified Spark Airmass axis value increased for added cylinder load (Boosted operation).....	10
Figure 7 -- MAP Sensor scalar to accommodate 2 and 3 bar sensors for FI modifications	10
Operating System Patches – When in doubt, install them.....it can't hurt	11
TCS Patch	11
VATS 1.....	11
VATS 2.....	11
MAF Frequency Patch.....	11
Manifold Vacuum Boost.....	11
Figure 8 -- 2005 E40 Enhanced OS and available System Patch example	12
Figure 9 -- 2010 E38 Enhanced OS and available System Patch example	12

Throttle-Up Industries Training Tutorial

Module 9 - Enhanced OS and Patches

Figure 10 -- 2007 OEM NA example of boost incapable IFR; needs Manifold Vacuum Boost patch!	13
Enhanced Operating Systems	13
LS1 Enhanced Operating System descriptions and programming instructions	13
1 bar Speed Density Enhanced (Gen III V8)	13
2 bar and 3 bar MAP - Speed Density (Gen III V8).....	13
LS1 Editor and Scanner modifications and Tune to PCM download procedures	14
LS2 E40 -- 2.5 Bar Speed Density Enhanced Operating System descriptions and programming instructions	15
2.5 Bar Speed Density PCM Editor and Scanner modifications and Tune to PCM download procedures.....	16
Figure 10 -- E40 EOS new VE table description	17
E38 -- 3 Bar Speed Density Enhanced Operating System descriptions and programming instructions.....	17
Application Install Procedure (E38 ECM).....	18
Enhanced Operating Systems and Patch Wrap up.....and one final feature to discuss	19
Real Time Tuning (RTT).....	19
Appendix 1 -- HP Tuners Enhanced Custom OS descriptions	21

Throttle-Up Industries Training Tutorial

Module 10 - Start-Up Tune File

Table of Contents

Introduction	3
Preparation to update your Tune file – Going back to Stock settings	3
Converting your current file back to stock.....	3
Building your Start-up File.....	4
Generic Related Changes	4
Mechanical Related Changes	4
Tuning Procedure Related Changes	5
Power Adder Changes.....	5
Cam Shaft Changes.....	5
Forced Induction Changes.....	6
Cooling Fans	7
Cooling Fan system types.....	8
Gen III Actual temperature control approach.....	8
Gen IV Percentage of Fan Power	9
Later Gen IV State based Fan Control	10

Throttle-Up Industries Training Tutorial

Module 11 - Tuning Strategies & Procedures

Table of Contents

Introduction	4
Throttle-Up Industries 10 Phases of Tuning – THE TUNING ROAD MAP TO FOLLOW!.....	4
Tuning Strategy Terminology Recap	9
Top level Operating Strategy Recap.....	10
Beginning the Tuning Process.....	11
Closed Loop Enable – PCM uses Narrowband O2 sensors to develop fuel trims and maintain Stoich	11
Open Loop Enable – PCM receives no feedback and fueling is entirely based on data in Open Loop, MAF or VE tables.....	12
Open Loop Enable	13
Long Term Fuel Trim (LTFT) disable – See figure 3 for the final table settings	13
Resetting Trims and Alternate Method for putting vehicle into open loop and disabling LTFT	16
Tuning Strategy vs. Operational Description	16
Strategy #1 -- Blended MAF/VE Operation or “hybrid mode”	16
Strategy # 2 -- MAF ONLY Tuning	18
3. Verify your scanner is set similar to Figure 6	18
7. Error Data collection and validation.....	22
Retrieved Scanner error data validation.....	24
MAF tuning wrap-up	33
Strategy #3 -- Speed Density or Volumetric Efficiency (VE) / Virtual Volumetric Efficiency(VVE) Tuning	34
Speed Density Tuning pre-requisites	35
Speed Density Mode Activation.....	35
Gen III vs. GEN IV Speed Density Tuning Procedure differences	37
Filter selection and importance	43
Additional Speed Density Tuning/Logging recommendations.....	49
Some personal thoughts and discussions on VE tuning...and also apply to MAF in a smaller way	51
Alternative Tuning Strategies and Procedures to support the Big 3 above.....	52

Throttle-Up Industries Training Tutorial

Module 11 - Tuning Strategies & Procedures

Scaling a Tune – the hard way.....	52
Scaling the tune the easy way -- <i>Double the Stoich and Half IFR; the alternate scaling technique</i>	54
Wide Open Throttle (WOT) and Power Enrichment (PE).....	57
Power Enrichment (PE) Operation.....	58
Tuning Strategies for Long Tube Header installs (shorties are CARB certified so you don't need this)	61
Fuel System Control Module (FSCM) Tuning Procedures	67
FSCM Scanner Settings.....	68
FSCM Editor Tables and parameter descriptions.....	70
Tuning Procedure re-cap.....	75
What Strategy to use, when and why	77
Closed Loop with MAF or MAF/Blended -- (Fuel Trims and Wideband).....	77
Open Loop with MAF (covers both MAF and MAF/VE Blended -- (Wideband)	77
Closed Loop Speed Density (VE only) -- (Fuel trims and Wideband)	78
Open Loop Speed Density -- (Wideband).....	78
Appendix 1 – Filter Development	79
Addendum 1 -- Fuel Trim Cell Definitions.....	81
Addendum 2 -- Version 4.X Graph Filter Functionality review	82
Addendum 3 -- Average and slope filter graphics.....	86
Addendum 4 -- Build Questionnaire	87